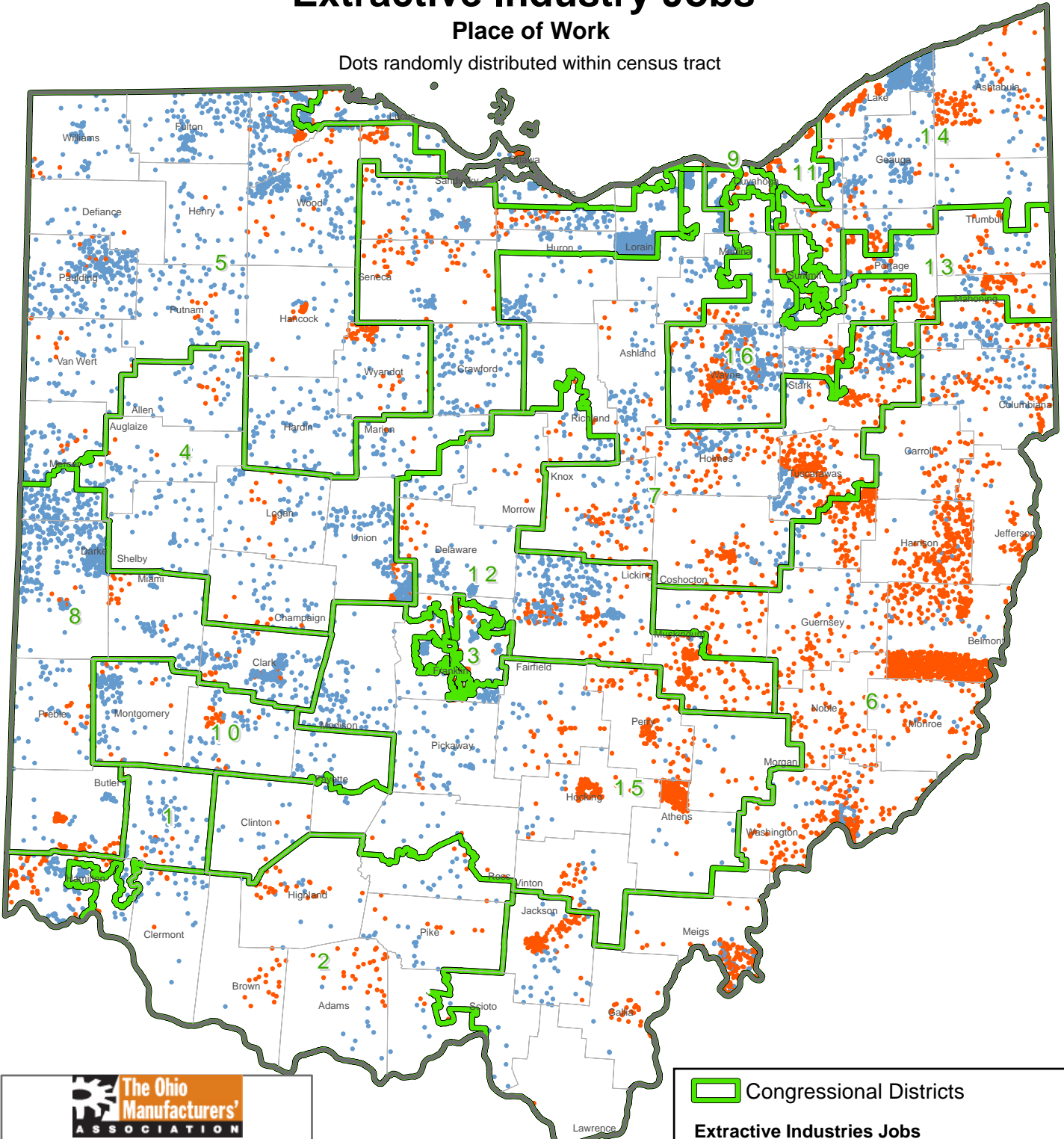


# Extractive Industry Jobs

## Place of Work

Dots randomly distributed within census tract



  
Prepared by  
The Northern Ohio Data & Information Service (NODIS)  
  
Maxine Goodman Levin  
College of Urban Affairs  
August 2014 mjs

Source:  
2011 Longitudinal Employer-Household  
Dynamics (LEHD)  
U.S. Census Bureau (<http://lehd.did.census.gov/>)

 Congressional Districts

**Extractive Industries Jobs**

-  1 Dot = 2
-  Agriculture/Forestry/Fishing/Hunting
-  Mining